

# Corporate Information

(As of March 31, 2011)

## Corporate Data

**Company Name** INPEX CORPORATION

**Established** April 3, 2006

**Capital** ¥290,809,835,000

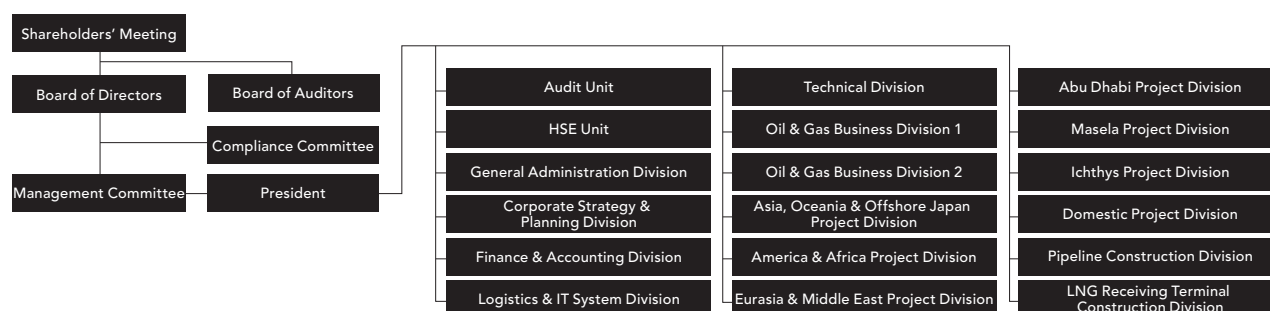
**Company Headquarters**

Akasaka Biz Tower 5-3-1 Akasaka, Minato-ku,  
Tokyo 107-6332, Japan

**Number of Employees (Consolidated)** 1,854

**Main Business** Research, exploration, development, production and sales of oil, natural gas and other mineral resources, other related businesses and investment and lending to companies engaged in these activities.

## Organization Chart (As of June 30, 2011)



## Stock Data

**Authorized Shares:** 9,000,000 common shares  
1 special class share

### Total Number of Shareholders and Issued Shares

Common shares: 38,753 shareholders/3,655,809 shares

Special-class share\*: 1 shareholder (Minister of Economy, Trade and Industry)/1 share

\* The Company's Articles of Incorporation stipulate that certain major corporate decisions require a resolution by the holder of the special-class share in addition to the approval of the shareholders' meetings or Board of Directors.

### Major Shareholders (Common Shares)

Name	Number of shares	Percentage of total shares*(%)
Minister of Economy, Trade and Industry	692,307	18.9
Japan Petroleum Exploration Co., Ltd.	267,233	7.3
Mitsui Oil Exploration Co., Ltd.	176,760	4.8
Mitsubishi Corporation	134,500	3.7
JX Holdings, Inc.	134,432	3.7
The Master Trust Bank of Japan, Ltd. (Trust Account)	130,362	3.6
Japan Trustee Services Bank, Ltd. (Trust Account)	124,404	3.4
State Street Bank and Trust Company	99,989	2.7
JP Morgan Chase Bank 380055	95,239	2.6
State Street Bank and Trust Company 505223	59,362	1.6

\* Percentage of total shares are for all issued and outstanding shares.

### Shareholding by Shareholder Type

Shareholder type	Number of shareholders	Number of shares	Percentage of total shares*(%)
Financial Institutions (Including Trust Accounts)	112	529,646	14.5
Securities Companies	47	25,738	0.7
Other Domestic Corporations	430	826,752	22.6
Minister of Economy, Trade and Industry*2	1	692,307	18.9
Foreign Corporations and Other	673	1,468,447	40.2
Individuals and Other	37,489	108,003	3.0
Treasury Stock	1	4,916	0.1

\*1 Percentage of total shares are for all issued and outstanding shares.

\*2 Excludes one special class share.

### Home Page

The Company's Web site provides investors with the most up-to-date IR information, including financial statements.

<http://www.inpex.co.jp/>

### Inquiries

Please contact us at:

INPEX CORPORATION

Corporate Strategy & Planning Division

Corporate Communications Unit

Investor Relations Group

Phone: +81-3-5572-0234, Fax: +81-3-5572-0235