



Public Relations Group, Corporate Communications Unit
Akasaka Biz Tower, 5-3-1 Akasaka, Minato-ku, Tokyo 107-6332 JAPAN

August 4, 2025

Abadi LNG Project in Masela Block, Indonesia Commences FEED

TOKYO, JAPAN - [INPEX CORPORATION](#) (INPEX) announced today that the Abadi LNG Project (hereinafter “project”) in the Masela Block in Indonesia has commenced Front End Engineering and Design (FEED) work. The project is operated by INPEX Masela, Ltd., an INPEX subsidiary.

The FEED work involves reviewing and defining the specifications of the facilities that will produce and process hydrocarbons from the Abadi Gas Field, as well as the onshore LNG plant (OLNG). The FEED work will consist of four packages: OLNG; floating production, storage and offloading (FPSO); subsea umbilicals, risers and flowlines (SURF); and gas export pipeline (GEP). Each package includes a scope related to carbon capture and storage (CCS). INPEX has at this time awarded the FPSO, SURF and GEP contract packages.

The FPSO contract package consists of a “dual FEED” method involving two contractor consortiums that will work in parallel but separately to ensure a competitive environment is maintained. In this method, FEED work and Engineering, Procurement and Construction (EPC) work will be awarded to the same contractor consortium, effectively assigning EPC work to the contractor consortium that delivers technically and commercially superior FEED services. INPEX also plans to employ the dual FEED method for the OLNG contract package and will select the contractor and conclude the contract in due course.

The project’s annual LNG production volume is expected to reach 9.5 million tons, equivalent to more than 10 percent of Japan’s annual LNG imports. The project is expected to contribute to improving energy security in Indonesia, Japan and other Asian countries and generate a stable supply of low-carbon energy over the long term, based on its world-leading gas field properties and plentiful reserves enabling efficient development as well as the project’s CCS component.

INPEX expects the FEED work to contribute to the expansion of its natural gas and LNG business, and reduction of its own GHG emissions as outlined in [INPEX Vision 2035](#) announced in February 2025. In addition, the project is expected to contribute significantly to the economic development of the eastern part of Indonesia in particular, and help achieve Indonesia’s goal of reaching net zero CO₂ emissions by 2060. INPEX is also committed to further strengthening its business in Indonesia and will continue to actively engage in this effort.

About the Abadi LNG Project

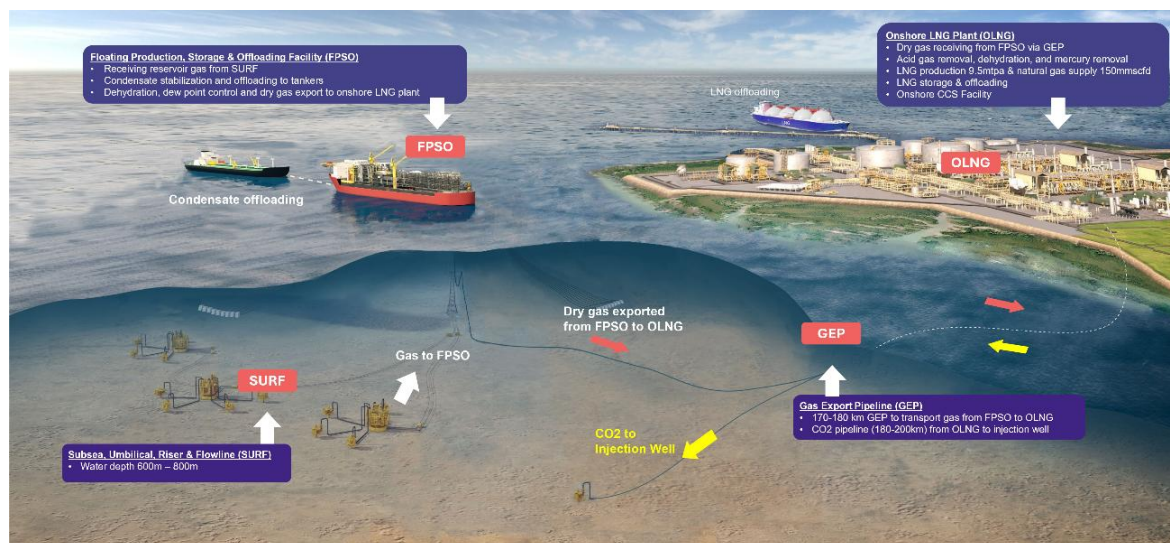
Term of PSC ¹	Until November 15, 2055
Contract area	Approximately 2,503 square kilometers
Water depth	400~800 meters
Block location	170~180 km Southwest of Tanimbar Islands Regency
Production capacity	Total natural gas output of 10.5 million tons per year (LNG equivalent) including: - Approximately 9.5 million tons of LNG per year - Local gas supply via pipeline Up to approximately 35,000 barrels of condensate per day
Participating interest	- INPEX Masela Ltd.: 65% (operator) - PT Pertamina Hulu Energi Masela: 20% - PETRONAS Masela Sdn. Bhd.: 15%
Other	Listed by the Indonesian government as a national strategic project in June 2017 and as a priority infrastructure project in September 2017.

¹ Production sharing contract

About the FEED contracts

FPSO (dual FEED)	Contractors: 1. PT Technip Engineering Indonesia (lead contractor), PT Technip Indonesia, PT JGC Indonesia (consortium) 2. PT Saipem Indonesia (lead contractor), PT Tripatra Engineers & Constructors, PT Tripatra Engineering, PT McDermott Indonesia (consortium) Scope of work: Reviewing and defining the specifications of offshore production facilities
GEP	Contractor: PT Worley SEA Indonesia Scope of work: Reviewing and defining the specifications of GEP from FPSO to OLNG
SURF	Contractor: PT Worley SEA Indonesia Scope of work: Reviewing and defining the specifications of SURF

Project concept diagram



About INPEX

INPEX is Japan's largest exploration and production (E&P) company, engaged in the development and operation of oil and gas projects worldwide. We are committed to contributing to a brighter future by delivering energy in a sustainable way. As part of this commitment, we are also engaging in lower-carbon solutions such as CCS, hydrogen and integrated power supply, while pursuing new opportunities in the evolving energy landscape.

For more information, visit <https://www.inpex.com/english/index.html>.

Media Contact: INPEX Tokyo Office, Public Relations Group, Tel) +81-3-5572-0750